

ADVANCED ALLOCATIONS

OUR COMPLETE FINANCIAL SUITE INCLUDES:

Flagship Financial Management Product:

Navigator – designed for nonprofits, international NGO’s and the public sector.

Navigator Extended Product Suite:

- AwardVision
- CommunityCare
- DonorVision
- Human Resources/Payroll
- Investments
- MinistryView
- Portals

Navigator Functional Areas:

- Advanced Allocations
- Budgeting/Forecasting
- Fixed Assets
- Core Financials
- Inventory
- Procurement
- Sales Orders

Navigator Suite Key Product Features:

- Multi-Currency
- Multi-Language
- Integrated Excel Report Writer
- Financial Reporting
 - Excel Consolidated
 - Export Tool
- Workflow Management with Approvals
- Microsoft Office Integration

The ability to have any transaction allocated immediately upon posting to your detailed cost centers increases the value of your data for real-time financial analysis, as well as facilitating expenditure approvals and budget controls based on your responsibility center rules.

NAVIGATOR ALLOWS YOU TO:

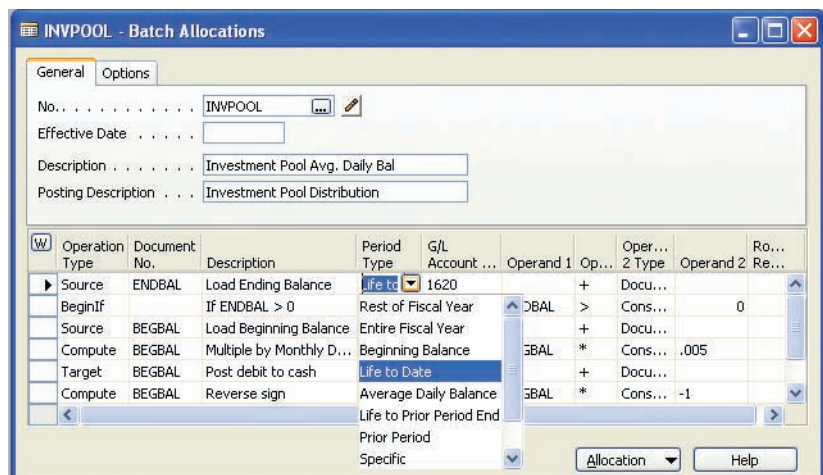
- Attach line allocation codes to any transaction in any functional area
- Review, approve and post allocated amounts in real-time
- Allow you to preview allocated amounts before posting
- Define batch allocations to perform complex period-end distributions
- Use budget, statistical, commitment, encumbrance and actual data
- Apply any timeframe for data extraction including average daily balance
- Derive percentages based on posted amounts and account dimensions
- Post results of batch allocations to journals or directly to GL

SYSTEM-WIDE LINE ALLOCATIONS

Line allocation codes can be attached to any transaction in the system such as general journal entries, requisition lines, purchase order lines, invoice lines, payroll calculations. An entered amount is distributed based on the allocation specification and each resulting amount is evaluated for budget control and approval rules before posting. Line allocations allow you to pre-actively define how amounts should be approved and distributed, greatly improving the validity for your data for reporting and analysis.

BATCH ALLOCATIONS

Batch allocations are defined using a high-level instruction set to perform data extraction, manipulation and posting functions. Any data stored in the general ledger can be used as a source or basis for allocations and computed results can be reviewed by users before final posting back to the general ledger. The easy instruction set allows power accounting users to manage the allocation algorithms and implement powerful processes without depending on technical or external consulting resources.



ADVANCED ALLOCATIONS

ABOUT SERENIC

Serenic Corporation is a Microsoft Industry Solutions Vendor with a mission to deliver highly functional software solutions for nonprofits, international NGO's and the public sector. We believe passionately in developing quality software which will solve the unique requirements of our clients while lowering the total cost of ownership proposition. We measure success by the satisfaction of our clients and business partners.



THE SERENIC/MICROSOFT CONNECTION

We are a Gold Certified Microsoft Industry Solutions Vendor and we use the Microsoft Dynamics NAV product as the basis for our Serenic Navigator product. Because the Dynamics NAV product provides us complete access to its source code, we have been able to develop a fully-integrated vertical product. Our partnership with Microsoft assures you of software designed to meet your needs as well as a secure long-term investment.



Microsoft Business Solutions
ISV/Software Solutions

2009 Microsoft Dynamics
ISV of the Year
United States

LINE ALLOCATION METHODS

Line allocations allow for the following calculation types:

- 1) Fixed Percentage – when percentages are known up-front
- 2) Derived Percentage – percentages are computed based on posted balances
- 3) Fixed Amount – where all amounts are known up-front
- 4) Combination – combines fixed amount and percentage allocations
- 5) Markup Percentage – generates a markup debit and credit automatically

The screenshot shows the 'DEPARTMENT - Line Allocations' window. It has two tabs: 'General' and 'Markup Filters'. The 'General' tab is active. Fields include: 'No.' (DEPARTMENT), 'Effective Date', 'Description' (Allocate by departments), and 'Posting Description' (Allocate by departments). On the right, 'Calculation Type' is set to 'Fixed Percentage', 'Basis Group By' is 'Fixed Percentage', 'Total Amount' is 'Derived Percentage', and 'Total Percentage' is 'Fixed Amounts'. Below these fields is a table with columns: 'G/L Account Filter', 'Fund Filter', 'Depart... Filter', 'Project Filter', 'Amount', and 'Percentage'. The table contains three rows: ADMIN (0.00, 30.00), FINAN (0.00, 30.00), and INFOT (0.00, 40.00). At the bottom right are 'Allocation' and 'Help' buttons.

PERIOD TYPES SUPPORTED

- 1) Year To Date
- 2) Current Period
- 3) Rest of Fiscal Year
- 4) Entire Fiscal Year
- 5) Beginning Balance
- 6) Life To Date
- 7) Average Daily Balance
- 8) Life To Prior Period End

BATCH ALLOCATION OPERATIONS

- 1) Source – extracts data from any GL transaction type
- 2) Basis – extracts data and generates derived percentages for calculations
- 3) Compute – performs various mathematical operations
- 4) If – starts a conditional nest based on Source or Basis operations
- 5) EndIf – end a conditional nest started by an If operation
- 6) Target – generates information qualified for posting to the general ledger